

Go Beyond the Expected




THE MAKING PATHWAY



GO BEYOND

Ekya Nava nurtures, encourages, and empowers conscientious learners with a cross-disciplinary approach. The unique pathways we offer foster conscientious, cross-disciplinary learners, empowering them to go beyond conventional learning and establish crucial real-world connections.



Through the **Making Pathway** at Ekya Nava, we seamlessly weave curriculum elements, transforming imagination into tangible masterpieces. By infusing core concepts, we foster creative skills, ignite lateral thinking, and invite students to experiment freely in our vibrant Maker's Space.

The Pathway provides a platform for students to engage in a holistic learning experience beyond traditional classroom settings. The hands-on, experiential approach in MakerSpaces aligns with contemporary educational philosophies that value active learning and developing practical skills alongside theoretical knowledge.



The Making Pathway aims to



Facilitate students to explore creative practices, innovation, and the making process with suitable materials.



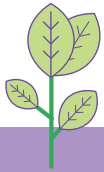
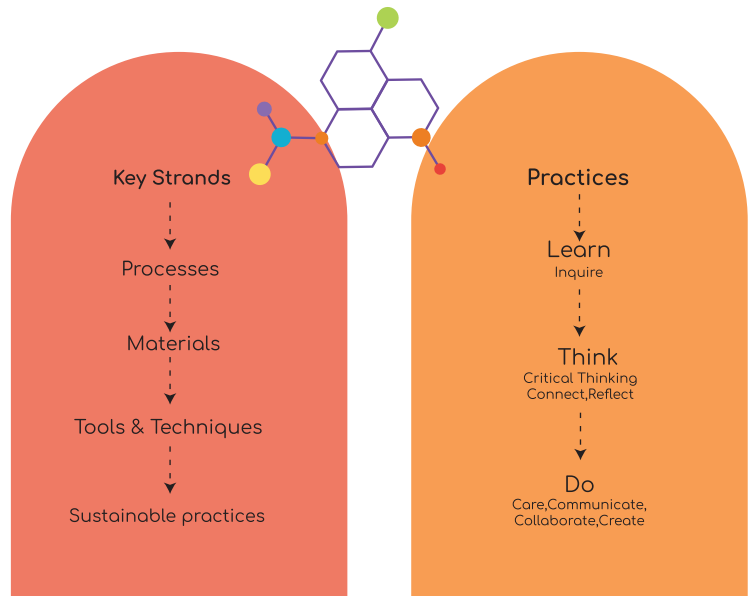
Cultivate hands-on skills and proficiency in tools and techniques, and foster environmental awareness.



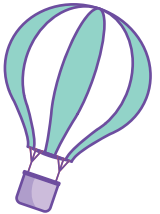
Foster students' creative potential by engaging in hands-on making processes to translate ideas into tangible projects, emphasising sustainable practices.



The Making Pathway includes Key Strands and Practices that guide learners through a comprehensive exploration of artistic, creative and design practices, fostering critical thinking, and practical skills essential for navigating the dynamic and diverse landscape of design disciplines.



Key Strands



Processes: Include hands-on processes that use tools (ex: hand and power tools), pottery, ceramics, weaving, woodworking, metalsmithing, laser cutting, 3D printing and other processes.

Materials: Inspires students to use hard, soft and new materials to turn their creative ideas into real projects.

Tools & Techniques: Through a hands-on approach, helps students hone their skills, and master an array of tools and techniques.



Sustainable Practices: Encourages students to make environmentally conscious choices, ensuring their creations have a positive impact on the planet.



At the senior school level, Project-based learning (PBL) approaches create dynamic and immersive learning opportunities with real-world applications. By integrating authentic design challenges into the curriculum, students develop the skills, mindset, and portfolio

Practices in the Making Pathway

The key practices in the Pathway Learn, Think and Do form a holistic framework for learners to navigate the complexities of the Making process, ensuring a thoughtful, intentional, and impactful approach to creating and making.



LEARN

Inquire: Explore creative practices, Innovation, and the making processes.



THINK

Critical Thinking: Critically examine artistic process and choices to grow and refine style.

Connect: Recognize the interdependence of art and the world by exploring projects' alignment with concepts, cultural influences, and historical contexts.

Reflect: Engage in mindful reflection to foster personal artistic growth and refine individual styles.



DO

Care: Demonstrate responsibility and environmental consciousness by aligning artistic endeavours with sustainable practices.

Communicate: Share insights, techniques, and support to enrich the creative process and foster collective creativity.

Collaborate: Articulate creative ideas, techniques, and inspiration behind projects to convey narrative and intention.

Create: Develop and produce tangible projects that contribute positively to the artistic landscape and the broader community.

By engaging in the key practices of the Making Pathway **Learn, Think, and Do**, learners will embark on a transformative journey to becoming skilled and impactful Makers.

